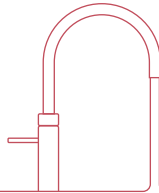
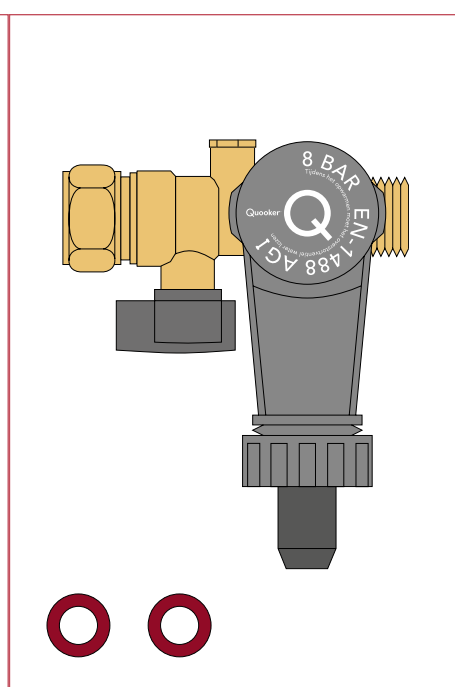
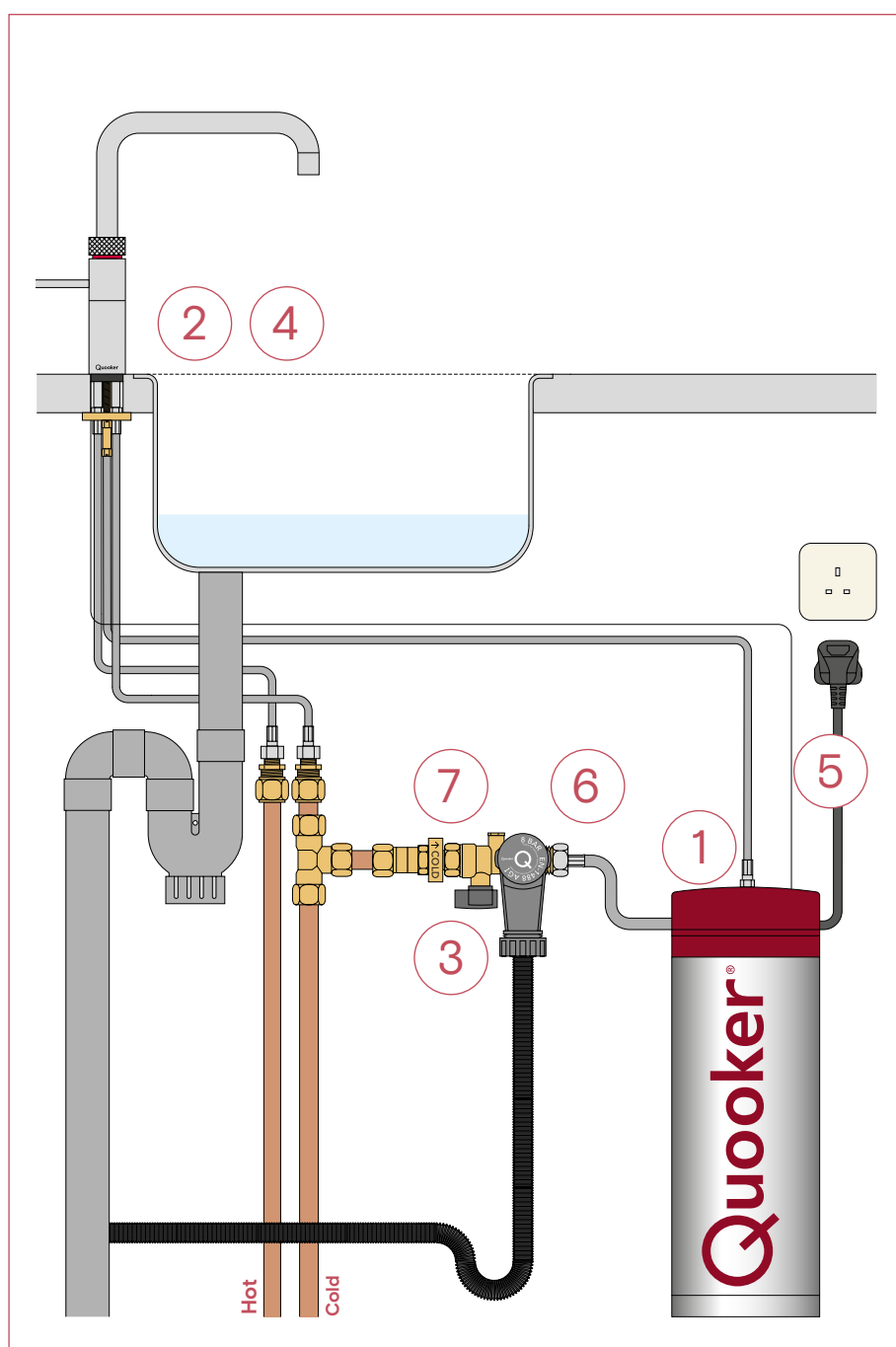


Replacing the inlet combination valve

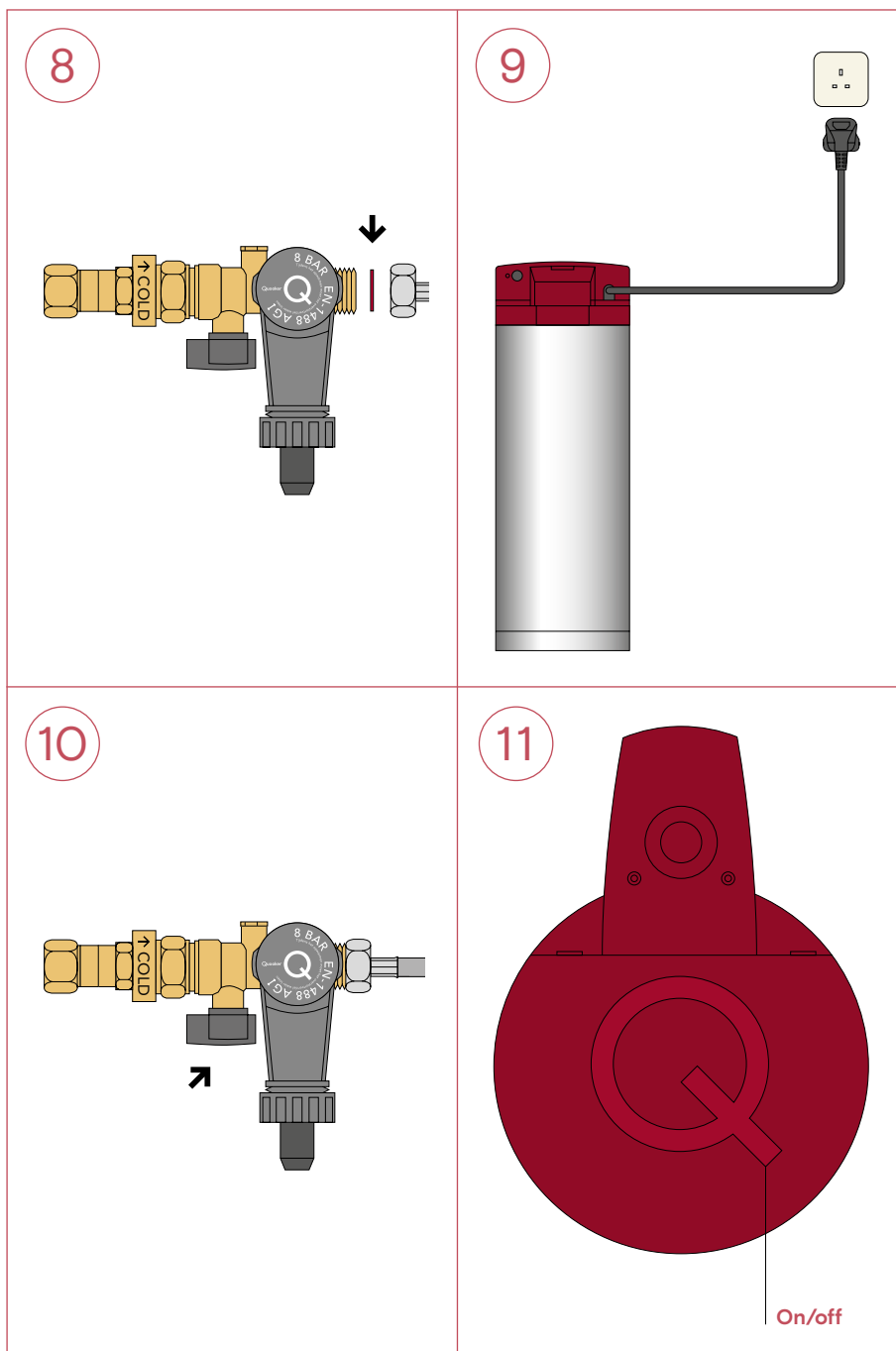
This guide shows how to replace the inlet combination valve of a PRO3-VAQ E tank.
The replacement for a COMBI E tank is similar and is also explained.



1. Switch off the tank with the Q-shaped button on top. Do not unplug it or switch off the power yet.
2. Dispense boiling and cold water together. Leave it to run until the water is completely cold and the hose between the tap and the tank has cooled down.
3. Close the stop valve (small grey knob) on the inlet combination as well as the mains water shut-off valve.
4. Open the boiling-water tap. If it is depressurised, no water will flow out of it.
5. Unplug the tank.
6. In case of a PRO3-VAQ E-tank, disconnect the hose from the inlet combination by turning the nut anti-clockwise (use spanner 24). In case of a COMBI E-tank, disconnect the two hoses from the mixing valve (use spanner 17 and 24) and disconnect the mixing valve from the inlet combination valve.
7. Disconnect the valve from the mains pipe or pressure reducing valve, and fit the new inlet combination valve.



8. In case of a PRO3-VAQ E-tank, reconnect the hose using the new fibre washer supplied with the valve. In case of a COMBI E-tank, reconnect the mixing valve using the new fibre washer supplied and the two hoses to the mixing valve.
9. Plug the tank back in. Switch on the power.
10. Open the mains water shut-off valve as well as the grey stop valve on the inlet combination.
11. Check for leaks. Switch the tank on with the Q-shaped button.



Please note

After switching on the tank, the light should be on both the tap and tank. The tank will be fully heated and ready for use in around 10–20 minutes. After it has heated up, the tap light will go off and the tank light will change to a fading in and out (heartbeat light).

From time to time, unscrew the tap nozzle and descale the aerator in a vinegar-water solution.

For any further questions, do not hesitate to contact our service department on 0207 923 3355 (option 3 for service) or email us at: service@quooker.co.uk.

Quooker®

Quooker UK Ltd.
Beaumont Buildings
Great Ducie Street
Manchester
M3 1PQ (UK)
+44 (0)20 79233355
info@quooker.co.uk
www.quooker.co.uk