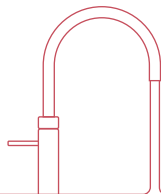


Upgrading a Scale Control Plus to a Scale Control R



Quooker®

Introduction

How does the Quooker Scale Control R work?

The Scale Control R reduces the water hardness in order to prevent limescale build-up in the tank. This extends its lifespan and improves the taste of water in hard water areas. The Scale Control R consists of a filter head and a cartridge. This cartridge softens the water that flows through it by means of an ion exchange process. The cartridge must be replaced after a certain period of time, which depends on the mains water hardness and how much Quooker boiling water is used. Replace the cartridge before it becomes completely saturated. You can order a new cartridge via quooker.co.uk. Clear instructions on how to replace the cartridge are printed on the cartridge itself. Saturated cartridges must be returned to Quooker. This is free of charge. The cartridges are issued on loan and remain property of Quooker. If the saturated cartridge is not returned to Quooker in time, after receipt of the new one, Quooker is entitled to recover the cost of the cartridge from the user (see the terms and conditions on quooker.co.uk) For quality and safety reasons, the cartridge can only be refilled by Quooker. Only genuine Quooker parts should be used with a Quooker and use of any third party parts of any sort will void the warranty.

Installing the Scale Control R

Use this manual to uninstall the Scale Control Pus and install the Scale Control R. Please be sure to follow the correct installation procedure, based on the type of tank already present. You can check the tank's serial number to determine its type:

Type PRO3 B – Serial numbers beginning with VBF, VBD, VBW, RVB

Type PRO3 E – Serial numbers beginning with VCE, VCF, VCD, VCW, RVE

Lifespan of the cartridge

The Scale Control R cartridge needs to be replaced regularly. The replacement frequency depends on how hard the water is and how much Quooker boiling water is used.

Timely replacement of the cartridge prevents the build-up of limescale in the Quooker system.

The supplied Scale Control Meter can only be installed with Quooker systems installed after October 2017. The Scale Control R Meter will sound an alarm signal when the cartridge needs to be replaced. Before mounting the meter, use the Total Hardness Test Kit provided to determine the cold mains water hardness, as described in section A. After doing so, mount the Scale Control R Meter and connect it to the Quooker tank, as described in section D.

For Quooker systems installed before October 2017, it is not possible to use the Scale Control R Meter supplied. The cartridge lifespan can be determined in a different way. Before installing the Scale Control R, test the water hardness with the Total Hardness Test Kit provided. Section A of this guide features detailed instructions on how to do this. With the help of this value, the service life of the cartridge can then be determined on the basis of the hardness table supplied. See section B.

Technical specifications

Height	420 mm
Diameter	130 mm
Maximum operating pressure	8,0 bar

Package contents

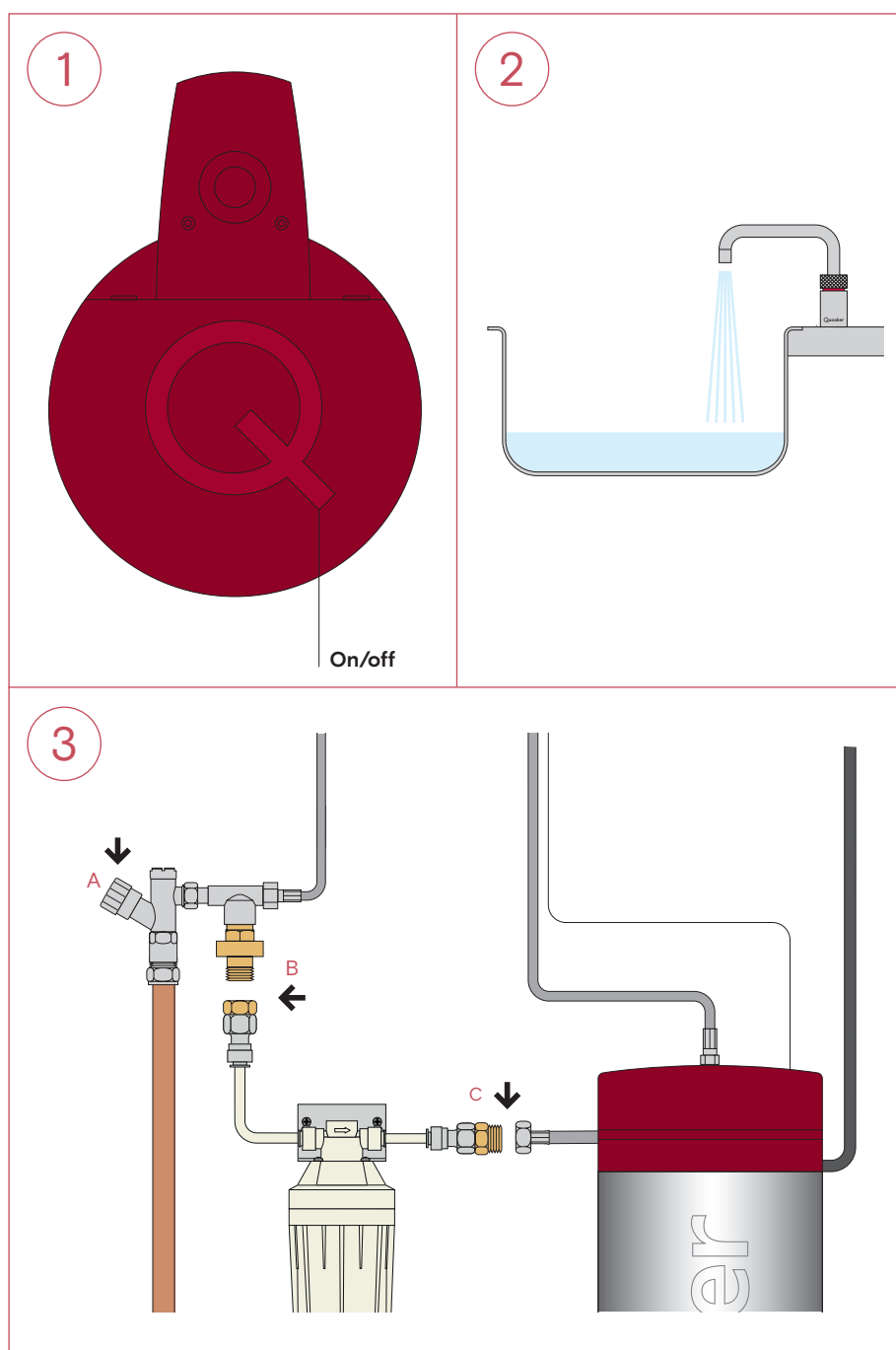
1. Scale Control R
2. Three blue fibre washers, Red fibre washer, Smooth reducing coupler, Striped reducing coupler, Coupling piece
3. Scale Control R Meter, metal washer, screw and sticker
4. Total Hardness Test Kit
5. Copper pipe, coupling nuts (2x) and clamping rings (2x) 15mm (not included)



A1

Uninstall the Scale Control Plus with a PRO3 B

- Follow the steps below to uninstall the Scale Control Plus with a type PRO3 B tank.
- The 'Q' on the tank cover is the on / off switch.



1. Turning off the tank

Turn off the tank using the Q button, but leave the plug in the socket with the power switched on.

2. Empty the tank

Activate the boiling water tap and let the water run cold. Also run the cold water tap at the same time. Close the isolation valve (3A) then stop the boiling water tap.

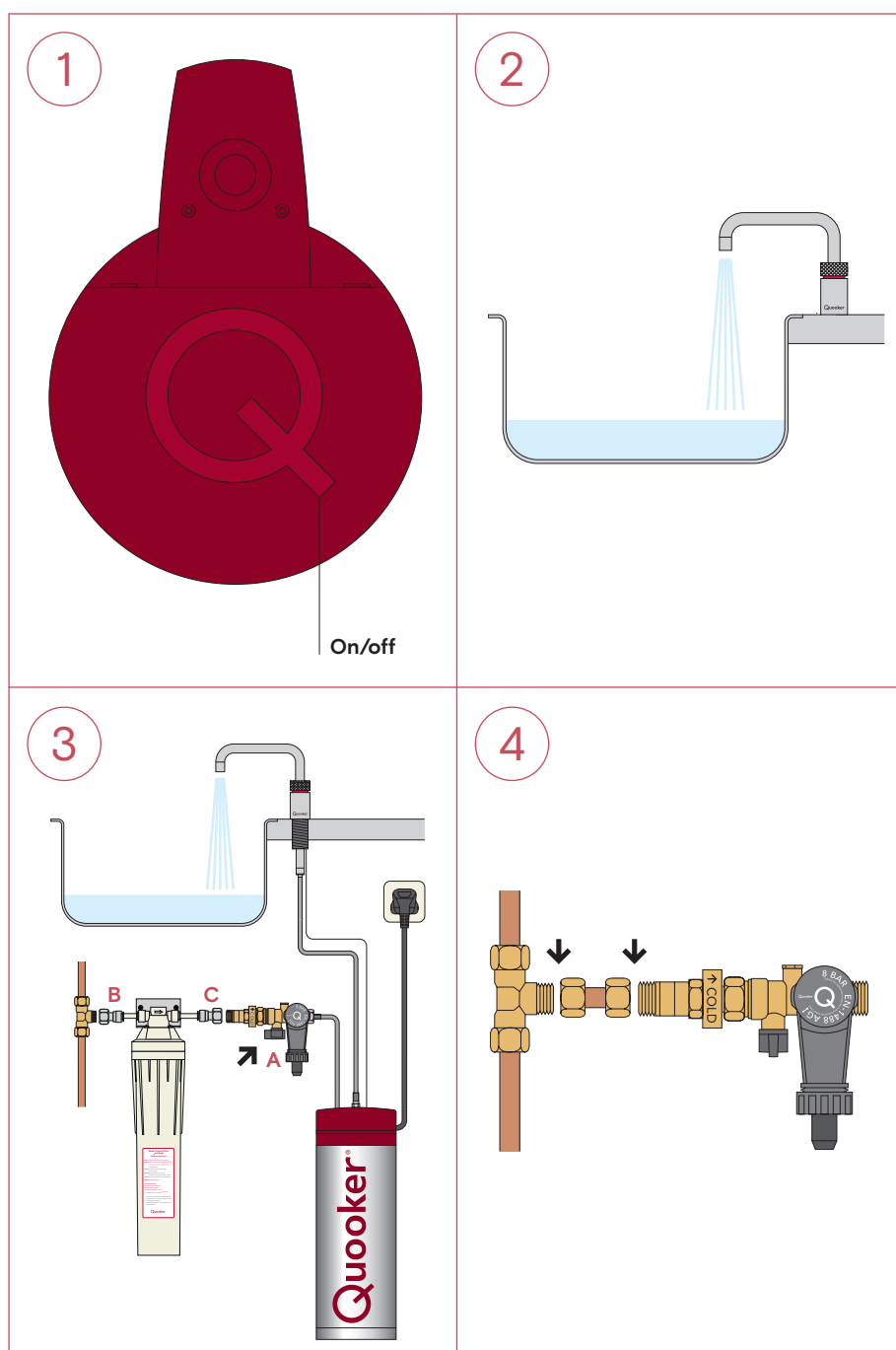
3. Disconnecting the Scale Control Plus

Unscrew both part B and C and disconnect the scale control including the coupling piece and fibre washer at C.

A2

Uninstall the Scale Control Plus with a PRO3 E

- Follow the steps below to uninstall the Scale Control Plus with a type PRO3 E tank.
- The 'Q' on the tank cover is the on / off switch.



1. Turning off the tank

Turn off the tank using the Q button, but leave the plug in the socket with the power switched on.

2. Empty the tank

Activate the boiling water tap and let the water run cold. Also run the cold water tap at the same time. Close the isolation valve (3A) then stop the boiling water tap.

3. Disconnecting the Scale Control Plus

Unscrew both part B and C and disconnect the scale control including the coupling piece and fibre washer at C.

4. Installing the copper pipe

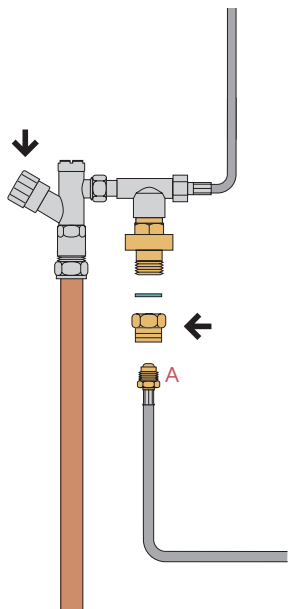
Install the copper pipe between the T-piece and inlet combination valve, including the coupling nuts and clamping rings.

B1

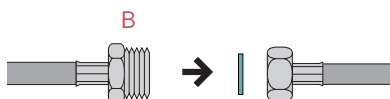
Installation of the Scale Control R with a PRO3 B

- Follow the steps below to install the Scale Control R with a Quooker PRO3 B tank.
- The 'Q' on the hood of the tank is the on / off switch.

1



2



1. Connecting the inlet hose

Connect the reducing coupler from the Scale Control R to the inlet reducing valve with the blue fibre washer. Connect the Scale Control R inlet hose (long) to the reducing coupler.

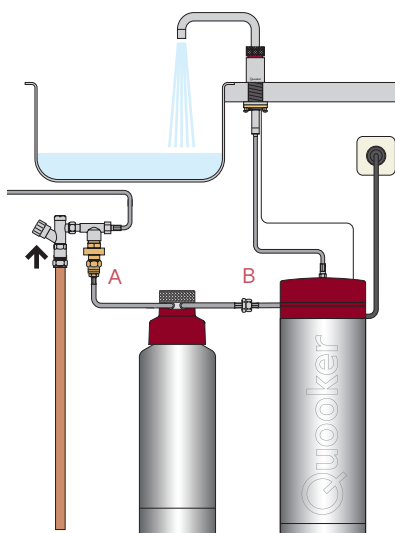
2. Connecting the outlet hose

Connect the Scale Control R outlet hose (short) to the tank inlet hose with the blue fibre washer.

3. Flushing out the cartridge

Open the isolation valve. Ventilate the system by activating the boiling water tap (push-push-turn) and run for 20 seconds. Check for leaks. Now activate the boiling function again and let the water run for about 5 minutes, until the water runs clear. Switch on the tank using the Q button. Once the water has heated up again, the Quooker system is ready to use (continue to section C).

3

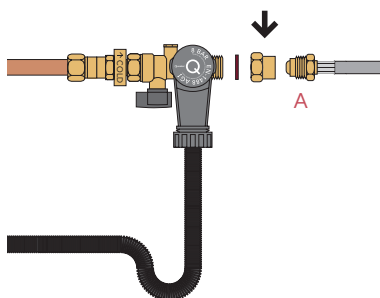


B2

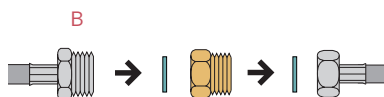
Installation of the Scale Control R with a PRO3 E

- Follow the steps below to install the Scale Control R with a Quooker PRO3 E.
- The 'Q' on the hood of the tank is the on / off switch.

1



2



1. Connecting the inlet hose

Connect the reducing coupler from the Scale Control R to the inlet reducing valve with the red fibre washer. Connect the Scale Control R inlet hose (long) to the reducing coupler.

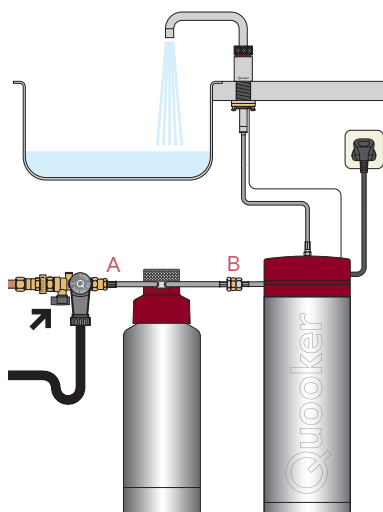
2. Connecting the outlet hose

Connect the Scale Control R outlet hose (short) to the tank inlet hose with the coupling piece and blue fibre washers.

3. Flushing out the cartridge

Open the isolation valve. Ventilate the system by activating the boiling water tap (push-push-turn) and run for 20 seconds. Check for leaks. Now activate the boiling function again and let the water run for about 5 minutes, until the water runs clear. Switch on the tank using the Q button. Once the water has heated up again, the Quooker system is ready to use (continue to section C).

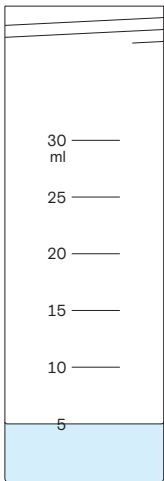
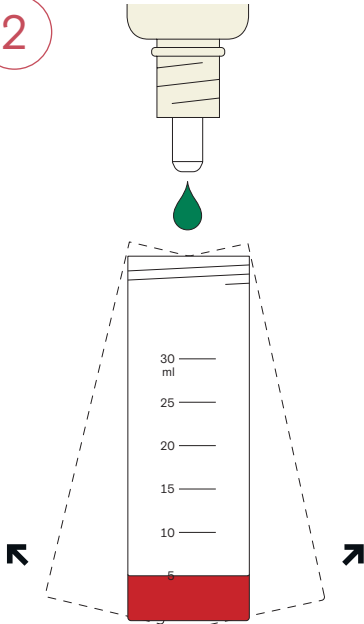
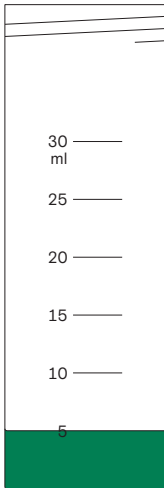



3



C

Hardness testing

- Test your water hardness with the Total Hardness Test Kit as described below, to determine the expected cartridge lifespan.
- Ensure the Scale Control Plus is working optimally by comparing the water hardness of the cold mains water to the hardness of the Quooker boiling water (allow the water to cool before testing). The second value should be lower.

<p>1</p> 	<p>2</p> 
<p>3</p>  <p>    ... =°dH </p>	

1. Filling test tube

Take the test tube out of its box. Take a sample of water from the mains cold water feed. Rinse out the test bottle with this sample water then fill to the 5 ml mark.

2. Adding reagent

Slowly add the reagent drop by drop, all the while swirling gently to mix the water. Count the number of drops it takes to turn the red colour of the solution to green.

3. Determining water hardness

One drop of the reagent is the equivalent to 1.0°dH (degree of hardness) – For example, if it takes 9 drops for the sample to turn to green, this means your water has a water hardness of 9°dH.



Hardness table (for systems before October 2017)

- The left side of the table shows mains water hardness. The right side of the table shows the expected lifespan of the cartridge, derived from the mains water hardness and the type of Quooker tank in use. For continuous optimum performance replace the cartridge before the end of the lifespan.
- Enter the replacement date for the cartridge in the table below. Keeping this table in a handy place will remind you to order a new cartridge on time.
- For Quooker systems installed after October 2017, the life of the cartridge is determined by the Scale Control R Meter. This sounds an alarm signal when the cartridge needs to be replaced. Section E describes how to install this meter.

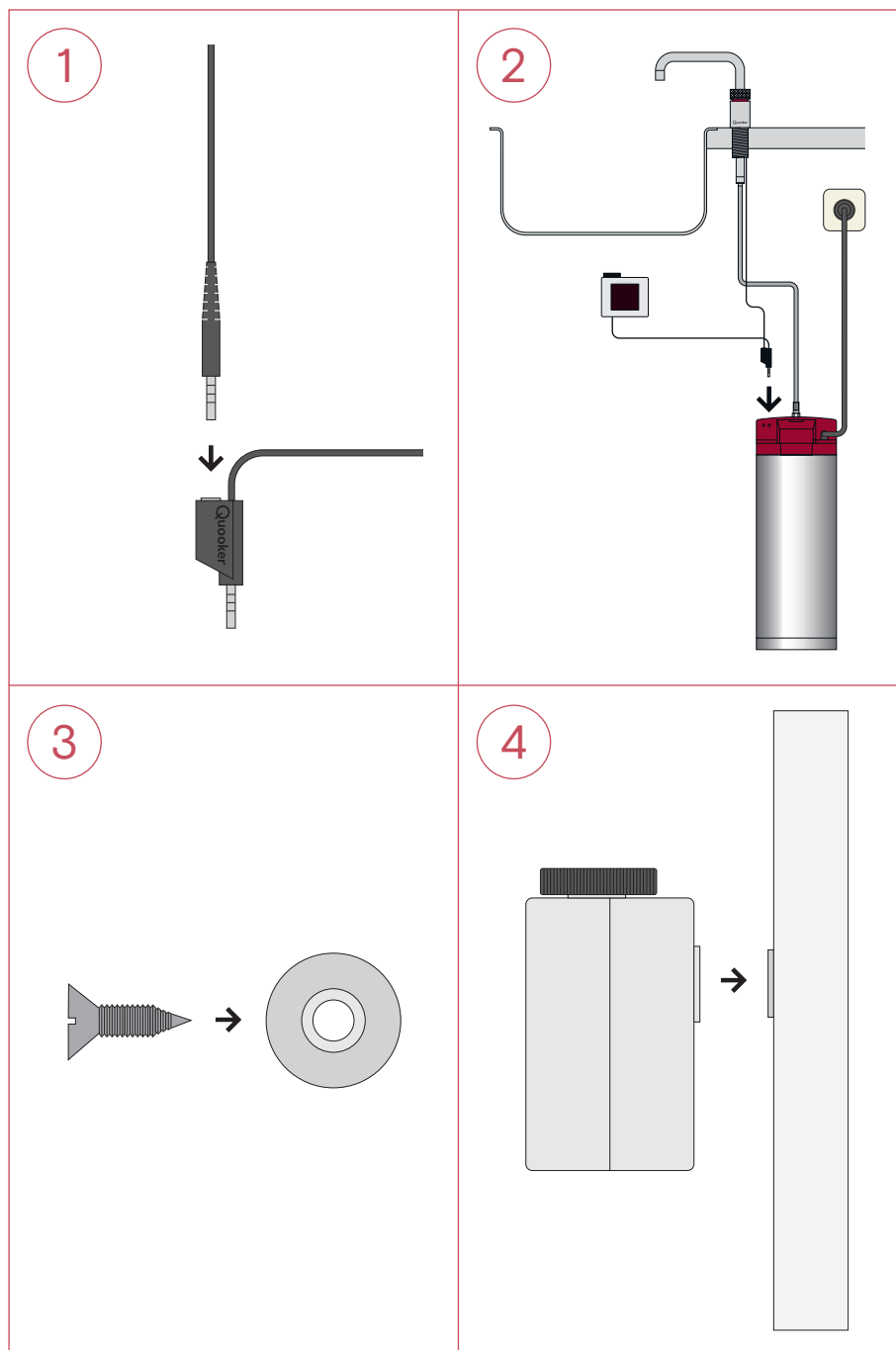
Total hardness (°dH)	* Cartridge lifespan (in months)		
Mains water	PRO3 B / PRO3 E	PRO7 E	COMBI E
10	37	16	14
11	33	14	12
12	30	13	11
13	28	12	11
14	26	11	10
15	24	10	9
16	23	10	9
17	22	9	8
18	20	9	8
19	19	8	7
20	18	8	7
21	17	7	6
22	16	7	6
23	16	7	6
24	15	6	6
25	15	6	6
26	14	6	5
27	14	6	5
28	13	6	5
29	13	6	5
30	12	5	5

* The cartridge lifespan is based on the average consumption of Quooker water for each type of Quooker tank:
PRO3 B and PRO3 E tank, 3 litres / day;
PRO7 E, 7 litres / day;
COMBI E, 8 litres / day.

	Cartridge 1	Cartridge 2
Lifespan		
Installation date		
Replacement date		

D

Installing the Scale Control R Meter (for systems installed after October 2017)



1. Connecting the tap

Detach the tap's jack plug from the tank and insert it into the jack plug socket of the Scale Control Plus Meter.

2. Connecting the Scale Control Plus Meter

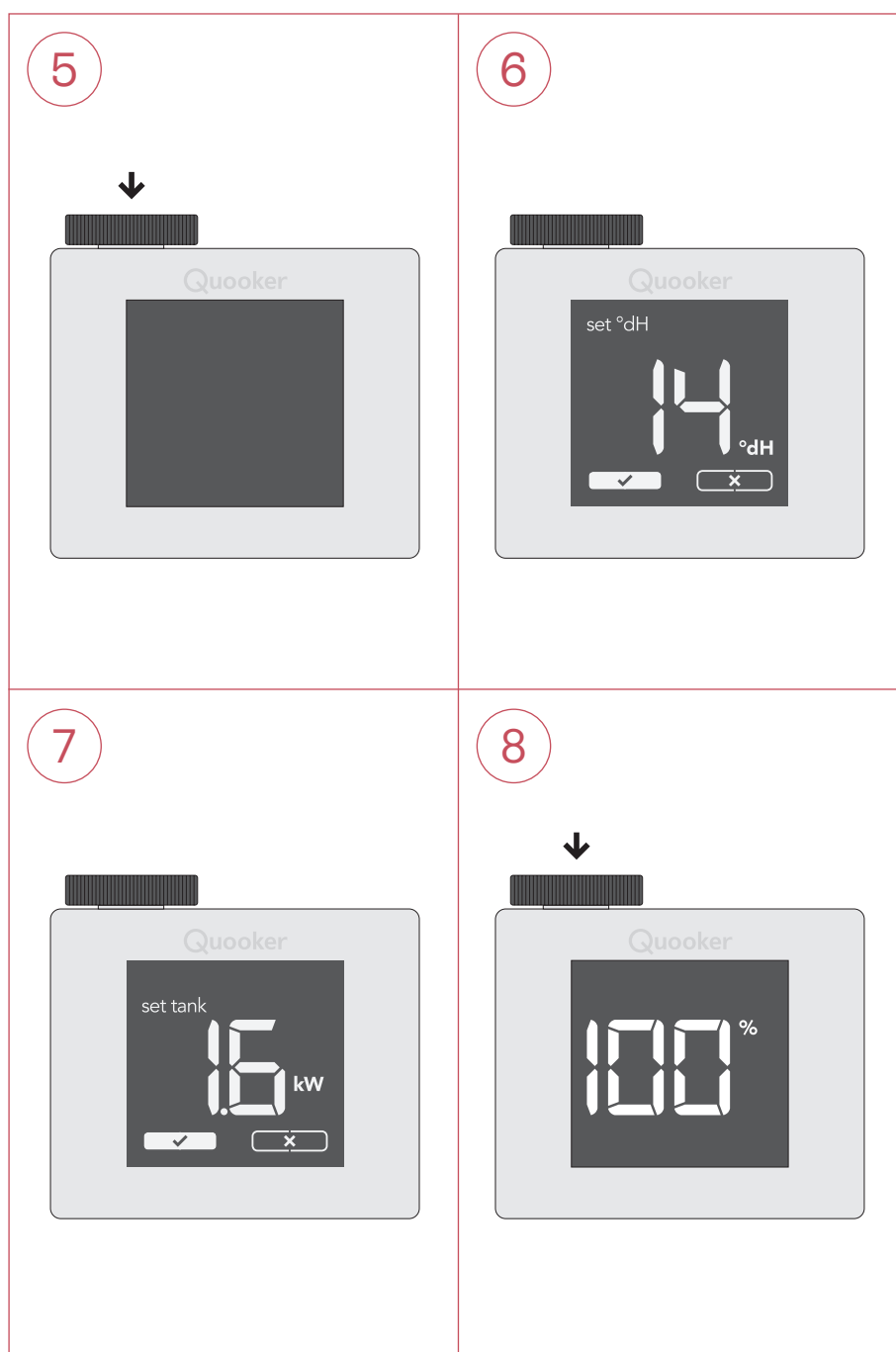
Insert the jack plug of the Meter into the inside port, closest to the centre of the Quooker tank.

3. Mounting the metal washer

Screw the washer provided into the kitchen cabinet using the screw provided.

4. Securing the Scale Control Plus Meter

Mount the Meter onto the metal washer using the magnet on the back of the Meter. Affix the sticker provided next to the Meter on the inside of the cabinet.



5. Activating Scale Control Plus Meter

Initially activate the Scale Control Plus Meter by pressing the wheel until the screen lights up.

6. Setting water hardness

Turn and press the wheel to input the water hardness (found using the steps in section D). Press the wheel again to choose the tick and confirm.

7. Setting tank type

Turn the wheel again to set the power (in kW) in correspondence with the type of tank you have (see table below). Press the wheel when the correct value is highlighted. Press again to choose the tick and confirm.

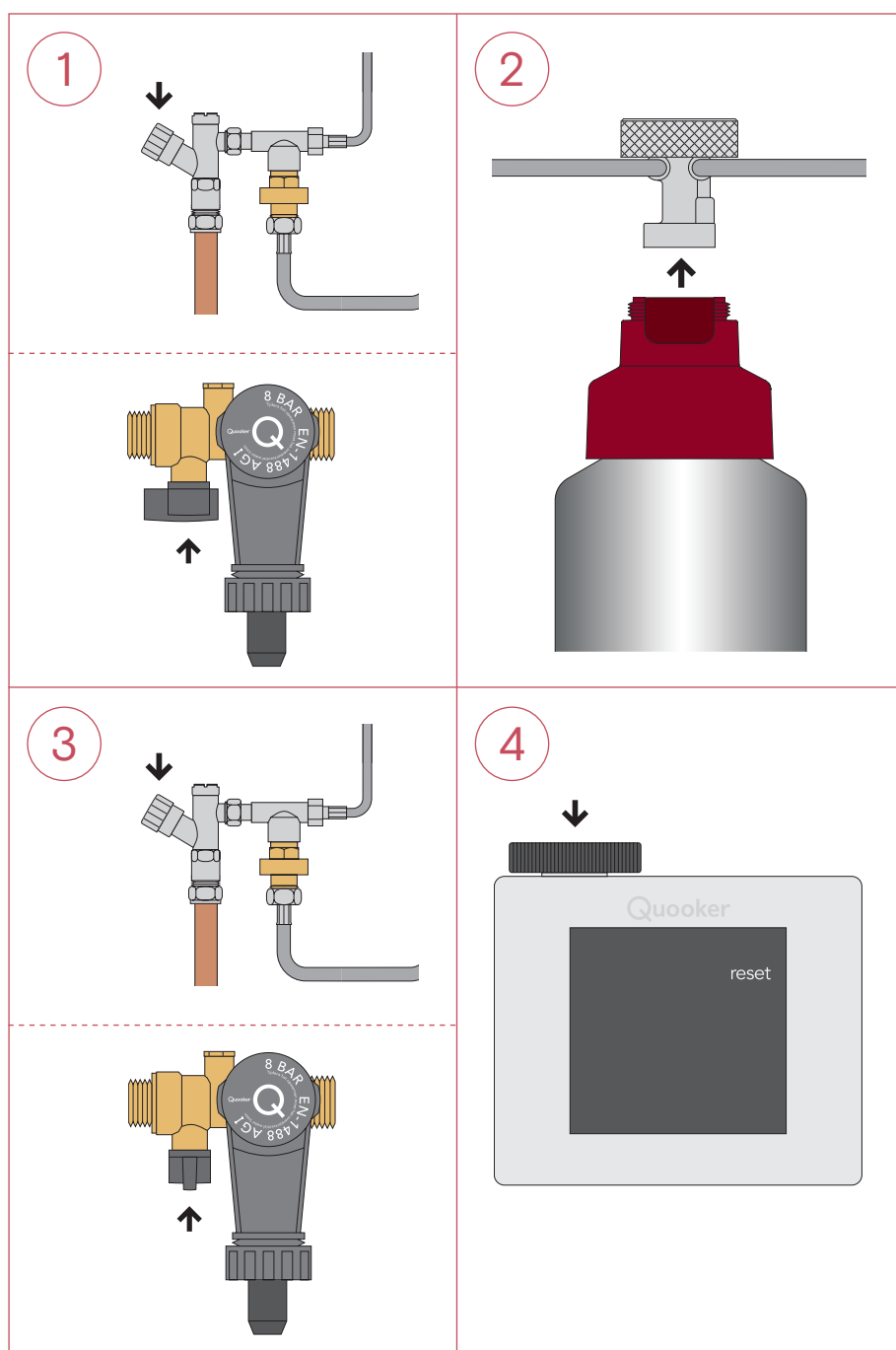
8. Using the Scale Control Plus Meter

After setting the meter, '100%' will appear on the screen. This percentage represents the lifespan of the cartridge and will slowly count down to '0%'. When this happens, the meter sounds an alarm signal that the cartridge needs replacing.

PRO3 B	1.6 kW
PRO3 E	1.6 kW

Replacing the cartridge

- The cartridge must be replaced before it becomes completely saturated.
- The 'Q' on the top of the tank is the on/off switch.
- When installed with a Meter: If it is not possible to replace the cartridge when the alarm sounds, you can temporarily snooze it (for 72 hours) by pressing the wheel on the Scale Control R Meter.



1. Releasing the pressure

Switch off the tank. Activate the boiling water tap and let the water run until it is cold. Also run the cold water tap at the same time. Stop the tap when it is completely cold. Close the isolation valve (PRO3 B) or the isolation valve on the inlet combination valve (PRO3 E).

2. Replacing the cartridge

Detach the saturated cartridge by unscrewing it out of the head and replace it with a new one.

3. Flushing out the system

Open the isolation valve (PRO3 B) or the isolation valve of the inlet combination valve (PRO3 E). Ventilate the system by activating the boiling water tap and run for 20 seconds. Check for leaks. Now activate the boiling function again and let the water run for about 5 minutes, until the water runs clear. Switch on the tank using the Q button. Once the water has heated up again, the Quooker system is ready to use.

4. When installed with a Scale Control R Meter: resetting the Meter

Wake-up the Meter by pressing the wheel once. Turn the wheel to 'reset' and press the wheel to confirm. The screen will go blank after a short while, it does this to conserve power.

Quooker®

Quooker UK Ltd.
Beaumont Buildings
Great Ducie Street
Manchester M3 1PQ
+44 (0)207 923 3355
service@quooker.co.uk
www.quooker.co.uk