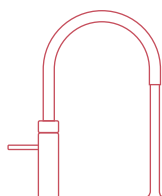


Scale Control R

Installation guide



Quooker®

Contents

	Introduction	3
	Technical specifications	3
	Contents of the package	4
A	Hardness testing	5
B	Hardness table	6
C1	Installation with a PRO3	7
C2	Installation with a COMBI	8
C3	Installation with a COMBI+	9
D	Installing the Scale Control R Meter	10

Rather watch a video?

Looking for Installation overviews?

Scan the QR code.



Introduction

Installing the Quooker system for the first time

Please be sure to follow the correct installation procedure, based on the type of tank already present.

Product information

The Scale Control R is a sustainable, replaceable cartridge which reduces the amount of limescale in the water. The cartridge can be easily replaced at the end of its lifespan. The lifespan of a Scale Control R cartridge will vary depending on water hardness and usage. Clear instructions on how to replace a cartridge are printed on the cartridge itself. The used cartridge needs to be returned to Quooker, this is free of charge. Upon return the cartridge will be refurbished, recycled and reused to reduce waste. For additional information, refer to quooker.com for return policy and our terms and conditions.

Installing the Quooker system for the first time

Please be sure to follow the correct installation procedure, based on the type of tank already present. First, install the Quooker tank and connect it to the tap. Then, use this manual to install the Scale Control R. Note, before mounting the Meter, use the Total Hardness Test Kit provided, to determine the cold mains water hardness, as described in section A. After doing so, mount the Scale Control R Meter and connect it to the Quooker tank, as described in section D.

For Quooker systems installed before October 2017, it is not possible to use the Scale Control R Meter supplied. The cartridge lifespan can be determined in a different way: Before installing the Scale Control R, test the water hardness with the Total Hardness Test Kit provided.

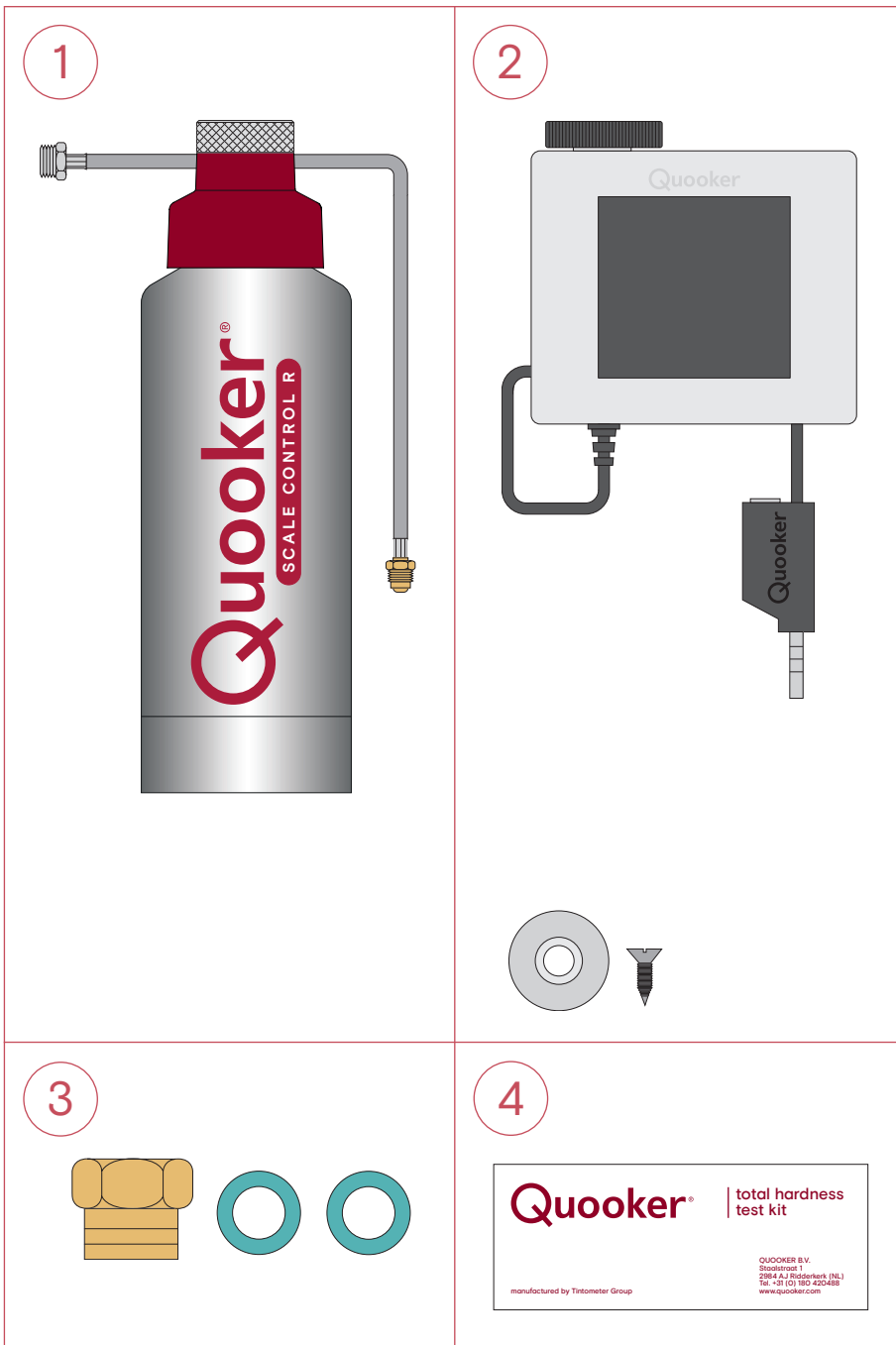
Section A of this guide features detailed instructions on how to do this. With the help of this value, the lifespan of the cartridge can then be calculated on the basis of the hardness table supplied. See section B.

Technical specifications

Height	420 mm
Diameter	130 mm
Maximum operating pressure	8,0 bar

Contents of the package

1. Scale Control R
2. Scale Control R Meter, Metal Washer, Screw and Sticker
3. Coupling piece and Fibre Washers
4. Total Hardness Test Kit



Tank check

This manual is for B-tank specific installations. On the side of your Quooker tank, you can find a label that specifies the serial number (see image below).

Type PRO3 B

Serial numbers beginning with VBF, VBD, VBW and RVB;

Type COMBI B and COMBI+ B

Serial numbers beginning with CPB and RCB.

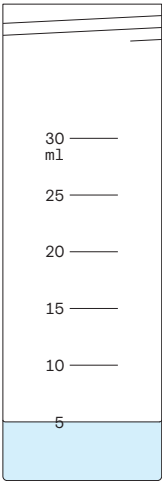
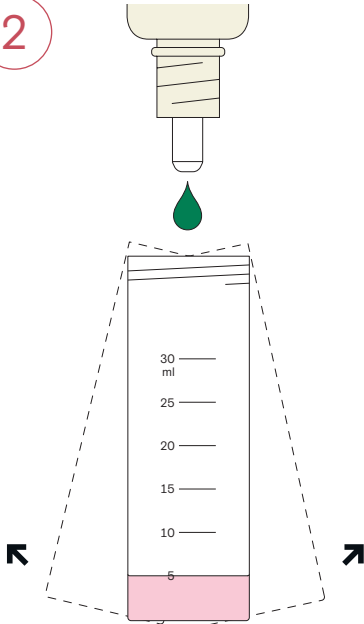
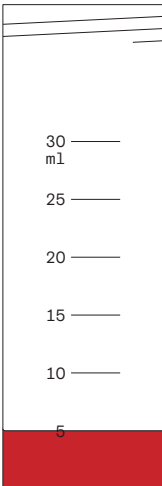
If you have another type of tank, please contact our service department to receive the right manual for your installation.



A

Hardness testing

- **Before installation:** Test your water hardness with the Total Hardness Test Kit as described below, to determine the expected cartridge lifespan.
- **After installation/In use:** to test if your Scale Control R works optimally, compare the water hardness of the cold mains to the water hardness of the Quooker boiling water.
Please note: allow the water to cool before testing, the second value should be lower.

<p>1</p> 	<p>2</p> 
<p>3</p>  <p>👉 + 👉 + ... = °dH</p>	

1. Filling test tube

Rinse the test tube with water from the cold mains water feed. Then take a water sample by filling the test tube to the 5 ml mark.

2. Adding reagent

Add the reagent drop by drop to the water sample. Gently swirl the test tube after each drop. Count the number of drops needed to change the colour of the water sample to red.

3. Determining water hardness

One drop of the reagent is the equivalent to 1.0°dH (degree of hardness) – For example, if it takes 9 drops for the sample to turn to red, this means your water has a water hardness of 9.0° dH.

B

Hardness table (for systems before October 2017)

- The left side of the table shows mains water hardness. The right side of the table shows the expected lifespan of the Cartridge, derived from the mains water hardness and the type of Quooker tank in use. For continuous optimum performance replace the Cartridge before the end of its lifespan.
- Enter the replacement date for the Cartridge in the table below. Keep this table in a handy place to remind you ordering a new cartridge in time.
- For Quooker systems installed after October 2017, the replacement date of the Cartridge is determined by the Scale Control R Meter. An alarm will sound on the Scale Control R Meter when the Cartridge needs replacing. Section D describes how to install this meter.

Total hardness (°dH)	* Cartridge lifespan (in months)		
Mains water	PRO3	COMBI	COMBI+
10	37	14	16
11	33	12	14
12	30	11	13
13	28	11	12
14	26	10	11
15	24	9	10
16	23	9	10
17	22	8	9
18	20	8	9
19	19	7	8
20	18	7	8
21	17	6	7
22	16	6	7
23	16	6	7
24	15	6	6
25	15	6	6
26	14	5	6
27	14	5	6
28	13	5	6
29	13	5	6
30	12	5	5

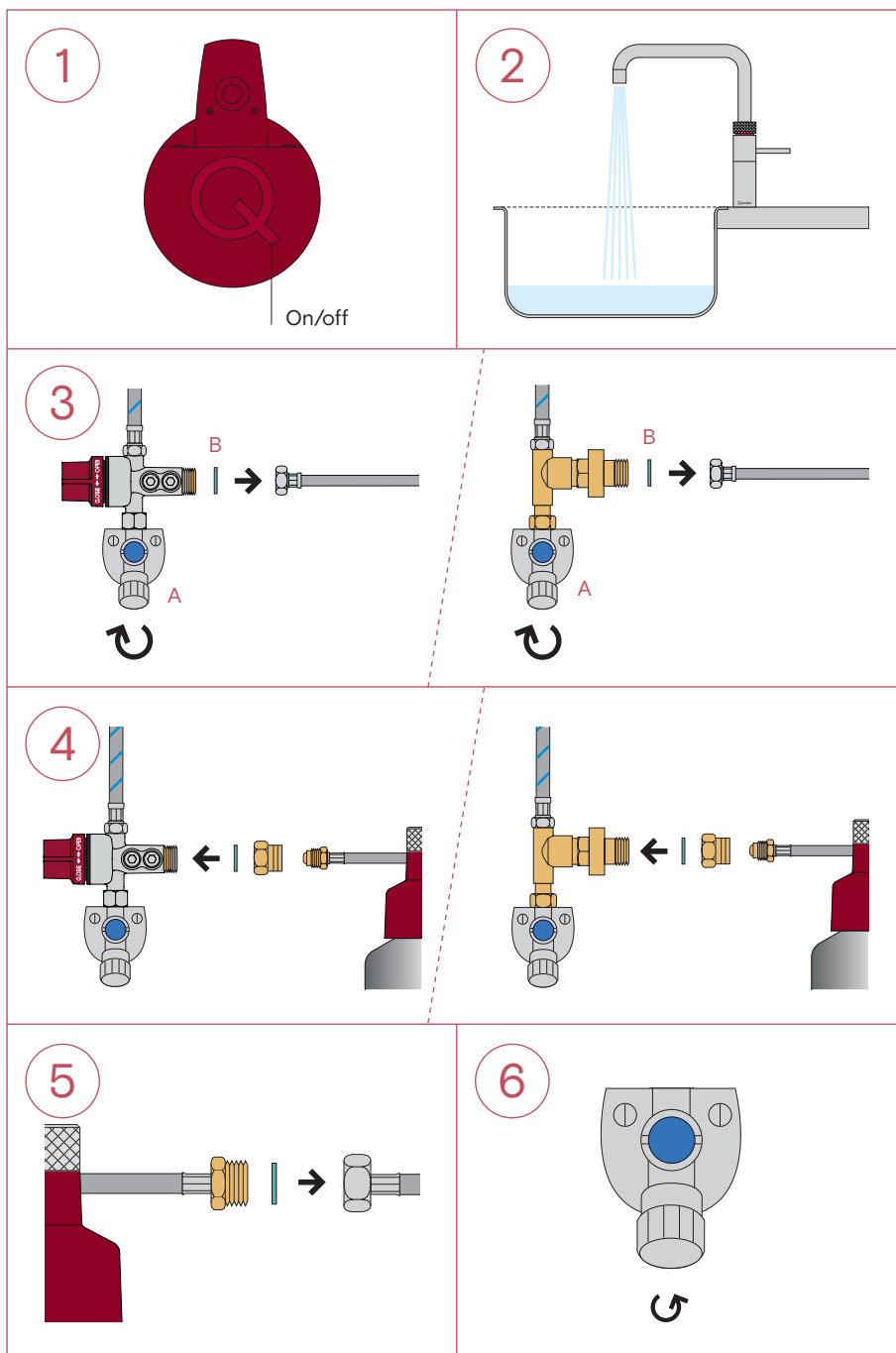
* The cartridge lifespan is based on the average consumption of Quooker water per each type of Quooker tank:
 PRO3 B tank, 3 litres / day;
 COMBI B 8 litres / day;
 COMBI+ B 7 litres / day.

	Cartridge 1	Cartridge 2	Cartridge 3	Cartridge 4	Cartridge 5
Replacement date					
Installation date					
Lifespan					

C1

Installation with a PRO3

- Follow the steps below to install the Scale Control R with a Quooker PRO3 B tank.
- Extra materials required: Spanners size 17 and 22 (2 ×).



1. Preparing the Tank

Switch off the tank, but leave the plug in the socket with the power switched on.

2. Draining the Boiling water

Activate the boiling water tap (push—push—turn) and run the cold water tap at the same time. Let the water run until it is cold.

3. Disconnecting the Tank's Inlet Hose

Close the main stopcock or cold water isolation valve (A). Disconnect the tank's cold water inlet hose from the QRV or Pressure Reducing Valve (B). Remove the old fibre washer.

4. Connecting Inlet Hose

Connect the Scale Control inlet hose (long), new fibre washer and adapter coupling to the QRV or Pressure Reducing Valve.

5. Connecting Outlet Hose

Connect the Scale Control R outlet hose (short) to the tank inlet hose with the blue fibre washer.

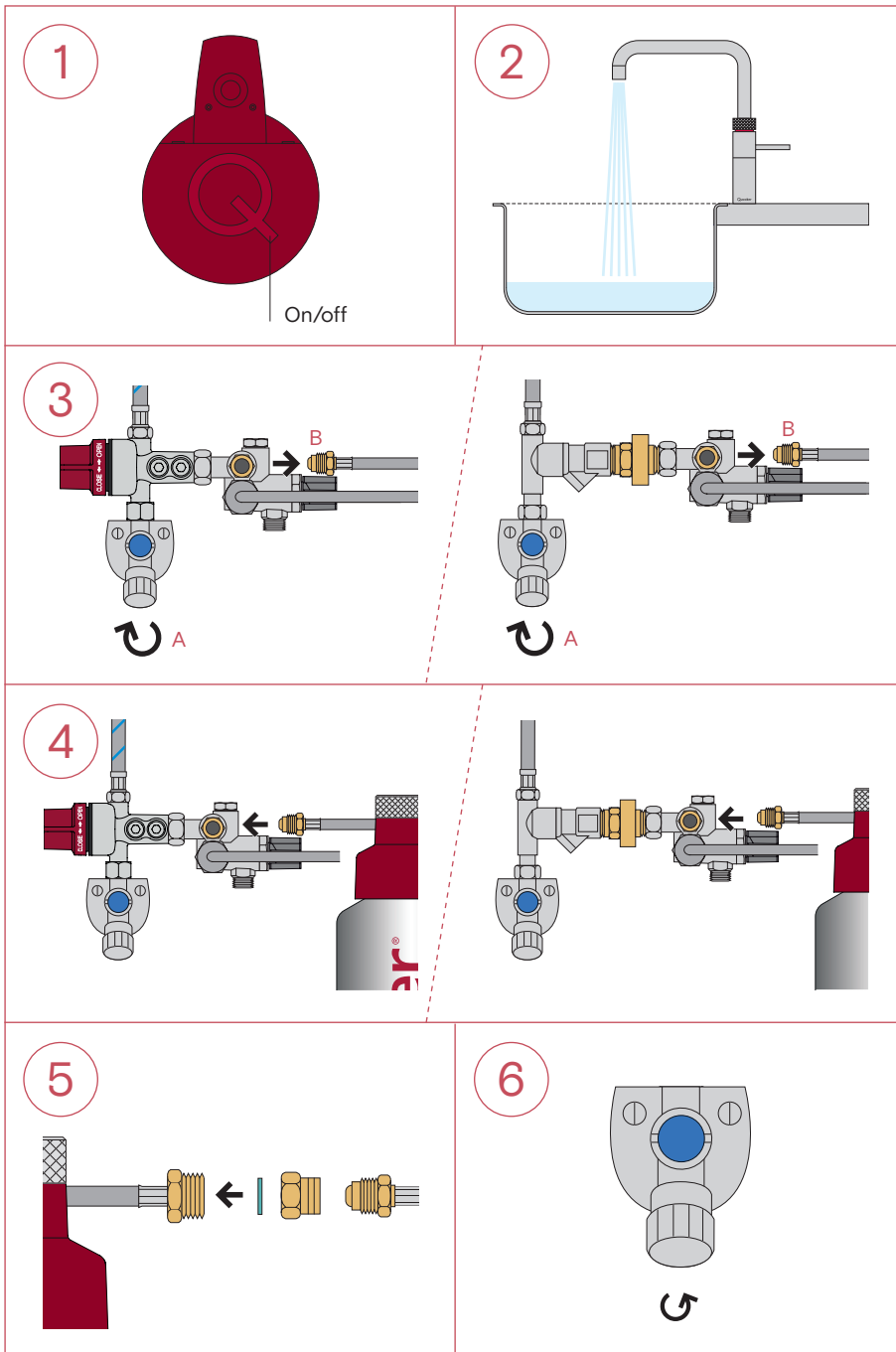
6. Flushing the Cartridge

Open the main stopcock or cold water isolation valve. Flush the system by activating the boiling water tap (push—push—turn) and run for 20 seconds. Check for leakages. Activate the boiling function again and let the water run for about 5 minutes, until the water runs clear. Switch on the tank. Once the water has heated up again, the Quooker system is ready for use.

C₂

Installation with a COMBI

- Follow the steps below to install the Scale Control R with a Quooker COMBI B tank.
- Extra materials required: Spanners size 17, 19 and 22 (2×).



1. Preparing the Tank

Switch off the tank, but leave the plug in the socket with the power switched on.

2. Draining the Boiling water

Activate the boiling water tap (push—push—turn) and run the cold water tap at the same time. Let the water run until it is cold.

3. Disconnecting the Tank's Inlet Hose

Close the main stopcock or cold water isolation valve (A). Disconnect the tank's cold water inlet hose from the mixer valve (B).

4. Connecting the Inlet Hose

Connect the Scale Control inlet hose (long) to the mixer valve.

5. Connecting the Outlet Hose

Connect the Scale Control R outlet hose (short) to the tank inlet hose with the coupler and the blue fibre washer.

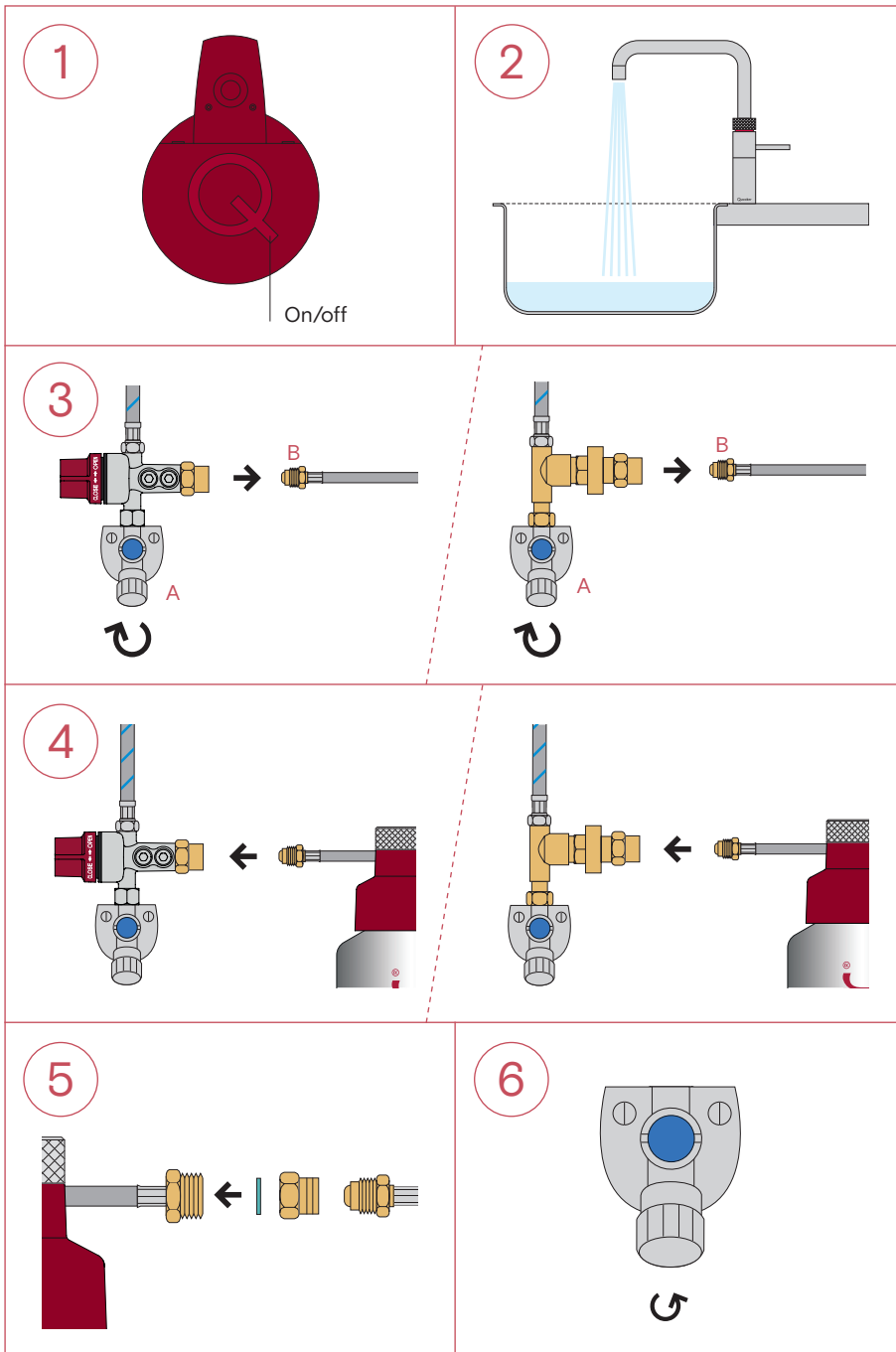
6. Flushing the Cartridge

Open the main stopcock or cold water isolation valve. Flush the system by activating the boiling water tap (push—push—turn) and run for 20 seconds. Check for leakages. Activate the boiling function again and let the water run for about 5 minutes, until the water runs clear. Switch on the tank. Once the water has heated up again, the Quooker system is ready for use.

C3

Installation with a COMBI+

- Follow the steps below to install the Scale Control R with a Quooker COMBI+ B tank.
- Extra materials required: Spanners size 17, 22 (2 ×) and 24.



1. Preparing the Tank

Switch off the tank, but leave the plug in the socket with the power switched on.

2. Draining the Boiling water

Activate the boiling water tap (push—push—turn) and run the cold water tap at the same time. Let the water run until it is cold.

3. Disconnecting the Tank's Inlet Hose

Close the main stopcock or cold water isolation valve (A). Disconnect the tank's cold water inlet hose from the QRV or Pressure Reducing Valve (B).

4. Connecting the Inlet Hose

Connect the Scale Control inlet hose (long) to the QRV or Pressure Reducing Valve.

5. Connecting the Outlet Hose

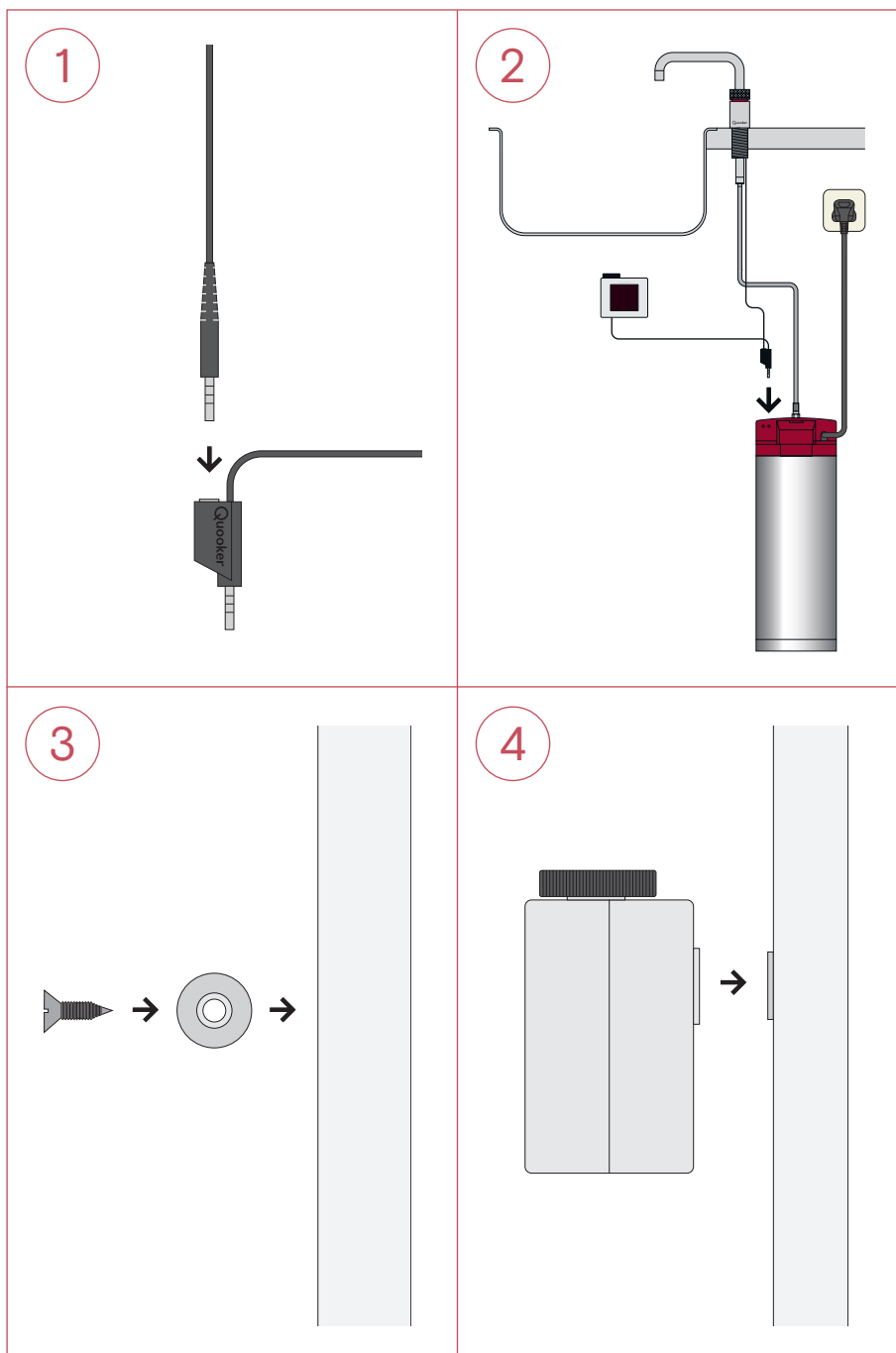
Connect the Scale Control R outlet hose (short) to the tank inlet hose with the coupler and the blue fibre washer.

6. Flushing the Cartridge

Open the main stopcock or cold water isolation valve. Flush the system by activating the boiling water tap (push—push—turn) and run for 20 seconds. Check for leakages. Activate the boiling function again and let the water run for about 5 minutes, until the water runs clear. Switch on the tank. Once the water has heated up again, the Quooker system is ready for use.

D

Installing the Scale Control R Meter (for systems installed after October 2017)



1. Connecting the tap

Detach the tap's jack plug from the tank and insert it into the jack plug socket of the Scale Control R Meter.

2. Connecting the Scale Control R Meter

Insert the jack plug of the Meter into the inside port, closest to the backside of the Quooker tank.

3. Mounting the metal washer

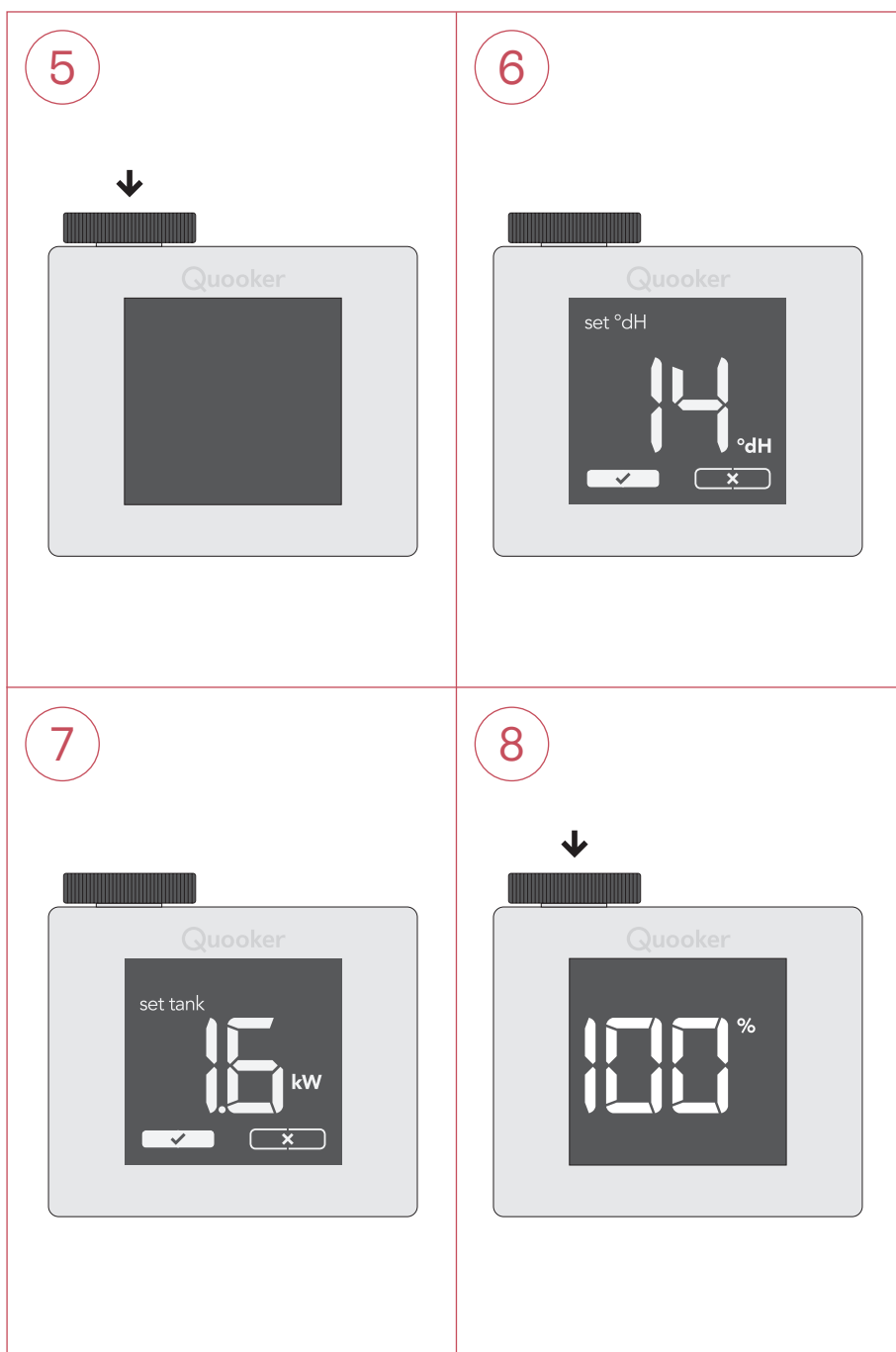
Use the supplied screw to fasten the metal washer to the kitchen cabinet.

4. Securing the Scale Control R Meter

Mount the Meter onto the metal washer using the magnet on the back of the Meter. Affix the sticker provided next to the Meter on the inside of the cabinet.

Please note

In case of error, try to install the jack plug of the Scale Control R Meter into the second port of the Quooker-tank. If the error still persists, please contact Quooker Service.



5. Activating Scale Control R Meter

Activate the Scale Control R Meter by pressing the wheel until the screen lights up.

6. Setting water hardness

Turn and press the wheel to input the water hardness (found using the steps in section A and B). Press the wheel again to confirm.

7. Setting Tank type

Turn the wheel again to set the power (in kW) in correspondence with the type of tank you have (see table below). Press the wheel when the correct value is highlighted. Press again to choose the tick and confirm.

8. Using the Scale Control R Meter

After setting the Meter, "100%" will appear on the screen. This percentage represents the lifespan of the cartridge and will slowly count down to "0%".

Snoozing the Scale Control R Meter

An alarm will sound on the Scale Control R Meter when the lifespan of the cartridge indicates 0%. The alarm can be snoozed up to 72 hours. Shortly press the wheel on the Meter to snooze the alarm. "Snooze" will now flash on the Meter. Shortly press the wheel again. A check-mark will appear. Shortly press the wheel again to confirm. In the meantime, you can order a new cartridge via our webshop.

Quooker®

quooker.com